

Alpine Presbytery

resourcing the braided river

Newsletter 1st May 2025

Cut off for items for next Newsletter is lunchtime on Thursday 8th May

2025 Autumn Gathering

9th - 10th May 2025, John Knox Rangiora, Corner High Street and King Street, Rangiora

Costs: Friday to Saturday \$80; Friday or Saturday only \$50; Saturday Andrew Root Sessions \$25 (includes lunch)

This year's Autumn Gathering will be held at John Knox in Rangiora. Joining us will be Dr Andrew Root and his wife, Rev Kara Root from the USA. Andrew is currently the Olson Baalson Professor of Youth and Family Ministry at Luther Seminary in Minnesota and lectures on the theology of ministry, youth ministry and culture. He is the author of a number of books including **When Church Stops Working** and **The End of Youth Ministry**. His wife Kara will be joining him. Kara is a Presbyterian minister with the PCUSA and is a spiritual director and author. We're really excited about having Andrew and Kara join us.

We want to make it easy for people to come along and hear what Andrew has to say and would encourage you to invite members from your wider leadership and volunteer teams to come along to hear him and to assist them with the registration costs for this.

More details, and Registration, at alpinepresbytery.org/2025-autumn-gathering/

As always, the registration cost covers meals and refreshments for the time that you are with us.

Linwood Avenue Union Church
(Cnr Tilford St & Linwood Ave)

ANNUAL FAIR

Saturday 10th May

10am to 12 noon

Bargains for Everyone
Buy Your Mothers Day Gifts!!

Books—Jams & Pickes—Baking—Cards—Sweets—
Crafts—Toys—Plants—Steptoe Goods

We really appreciate the Community support and
hope you come along and enjoy looking for a bargain

If you have goods you would like to donate the
Church office is open Mon-Fri from 9am-noon
Ph 3895 303

Sorry we are unable to take 2nd hand clothes beds or
electrical goods (including TV's)

Feedback Session - Hanmer Springs

We are holding an online feedback session to provide a space for anyone who wishes to comment on the review report of the Hanmer Springs Project ([drive.google.com/file/d/1f8yDYME0C71VTqp13csy9hw4uGtmasFO/view?usp=drive link](https://drive.google.com/file/d/1f8yDYME0C71VTqp13csy9hw4uGtmasFO/view?usp=drive_link))

This is an open session that anyone can attend.

Online Wednesday, 7 May, 7:00 – 8:00pm Google Meet. Video call link: <https://meet.google.com/qkd-vvyk-fdx>

Urgent Call for Assistance: Kowai-Cheviot Parish Preaching Roster

Robert Robati-Mani, Minister of Kowai Cheviot Parish (Amberley) is planning to take annual leave from **Monday 27th May 2025 to Sunday 16th June 2025**. During this time the parish is seeking willing individuals to assist with leading worship and preaching on three Sundays.

In addition to cover whilst the Minister is on leave, the parish, being deeply committed to fostering a meaningful and spiritually enriching worship experience for the congregation, is also seeking willing and gifted individuals to consider

Moderator: Rev Phyll Harris

moderator@alpinepresbytery.org

Phone 027 352 7886

Executive Officer: Rev Martin Stewart

executiveofficer@alpinepresbytery.org

Phone: 021 308 519

Kairuruku Whanake - Formation & Development Coordinator:

Abi Trevathan

abi@alpinepresbytery.org

Phone: 027 339 6006

Youth & Young Adults Enabler:

Rev Sage Harris

youth@alpinepresbytery.org

Phone: 027 356 0740

Ministries Coordinator - Kaihautū

Whakatipu:

Rev Dan Spragg

minco@alpinepresbytery.org

Phone: 021 770 112

Treasurer: Keith Christie

treasurer@alpinepresbytery.org

Office Support: Gail Weaver

office@alpinepresbytery.org

Newsletter Items:

Please share this Newsletter around your Parish, especially with members of Session/Parish Council and all office bearers.

Details of events, or requests to be added to the distribution list should be sent to Gail Weaver.

The Alpine Newsletter is a weekly email update of activities in and around the Presbytery. It is intended to inform, connect, and encourage, and its content does not necessarily represent the views of Presbytery Council or staff, and the inclusion of articles, advertisements, and other content does not imply endorsement or agreement.

Resources

A selection of resources and links to resources to assist you with your work and outreach—including Online Worship Options— can be found on our website here: alpinepresbytery.org/resources/

assisting with their bi-monthly services in the future, particularly during periods when the minister is serving with the Waikari Parish.

If you feel called to assist, please contact one of the below with details of your availability for the upcoming months, and with any questions, suggestions, or ideas on how to collaborate effectively.

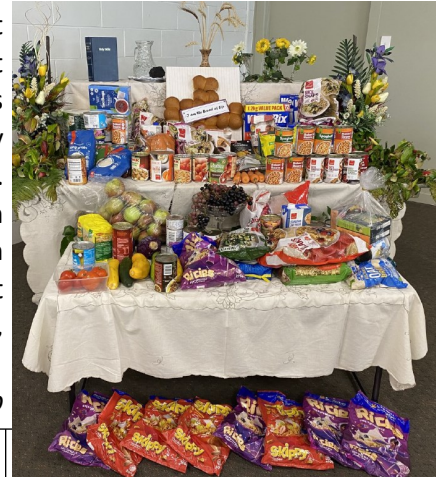
Jan Chisnall, Parish Clerk: phone 0276104112; email janchisnall@gmail.com

Rev Robert Rabati Mani: phone 0272080031; email rrobati@orcon.net.nz

Harvest Thanksgiving at Linwood Avenue Union Church

Members from New Brighton Union and Port Hills Uniting joined with us for our Harvest Thanksgiving service this year. Our table was filled with pantry items to be given away by our Community Trust in food parcels. Following the service 50 people sat down together to enjoy a traditional harvest lunch of "Peas, Pie and Mash" followed by fruit crumble with ice cream. A lovely service, enjoyable food and lots of great fellowship.

Rev. Jonathan Barb



Youth Workers Hui with Andrew Root

An opportunity to come and hear from the author of "The End of Youth Ministry".

Monday 12th May, 10.30am—1.00pm, 75 Hansons Lane, Christchurch, (Lunch provided)

RSVPs to Sage (sage@whakatupres.co.nz)



Part Time Job Vacancy – St. Mark's Church Office Administrator

St Mark's Presbyterian Church and Community Centre, Avonhead, Christchurch, is looking for a Church Administrator to work 15 hours a week, preferably Monday to Friday, 9am - 12noon. We will be paying a Living Wage.

This administrative role will require working with the Minister, the Parish Clerk, the Community Enabler, and other key leaders, however, our church is currently without a Minister, and during the vacancy you will be working closely with our Parish Council and the Community Enabler.

The role includes

Familiarity with Microsoft Office and OneDrive, and general computer skills

- Familiarity with Infodile Church Management Software and Xero Accounting Software, or willingness to learn
- General office tasks, such as photocopying, ordering supplies, compiling reports, answering phone enquiries, maintaining building warrant of fitness

The ideal applicant will have a friendly and welcoming attitude and be self-motivated to undertake tasks, often without supervision. We would welcome a person who can see what needs to be done and do it, but who is also not afraid to ask for guidance or assistance as necessary.

If you would like to apply or would like more information please email Jill White, Parish Clerk, at parishclerk@stmarks.net.nz. Application closes **Friday 23 May, 2025**. The successful candidate will start as soon as possible.

From the last Newsletter

- Office email address
- Presbytery Council membership Vacancies
- Social Housing Forum
- Sister Eveleen Retreat House

Coming Up

Pre-Gathering Kōrero and Dinner:
8 May

Presbytery Gathering: 9-10 May

Presbytery Retreat: 17—19 July

Coracle: 12—14 September

General Assembly: 20—23 October

Presbytery Directory:

All Parish Offices have been given a log-on to Infoodle, so please contact them initially if you need any contact details.

Due to our obligations under the Privacy Act, logon access is not openly available; anyone wanting this should send a request to Gail Weaver, Office Support, advising of their position in their Parish or the Presbytery.

Alpine Presbytery

Culture & Strategic Framework

To download this document, updated September 2020, go to: alpinepresbytery.org/wp-content/uploads/2021/01/culture-and-strategic-framework-september-2020.pdf

Mission Discernment

Mission Plans are required in our life in a few situations - in a Ministry Settlement Board process, or when applying for larger capital projects, for e.g. Beyond that, going through a discernment process to discover what God might be calling you into, can be (is always?!) highly useful - if it is well formed and kept alive!

I'm offering two options for attending a workshop where we'll go over Alpine's mission discernment tools. This will be an interactive time, and your questions are welcome! The aim is that you'll be able to use these tools effectively with your Church Council and Key Leaders. Or, if you're looking for someone to facilitate a process with you for your Mission Plan, or simply to explore the 'where are we?/ what shall we do?' question, then we can chat about that too.

The workshops will be held over video call and will last for around an hour.

Please follow this link and fill out the form to register for your preferred workshop option: forms.gle/KwP5xETMQ8FHUkSc9

Dan Spragg - Kaihautū Whakatipu - Ministries Coordinator

A Dementia Workshop

Monday 5 May (*note change of date*) **9.15- 12.00 noon**, at **The Village Presbyterian Church, Corner Ilam & Aorangi Road, Bryndwr, Christchurch.**

Programme:

Dementia and Delirium 101: Dr Susan Gee is the Lead Researcher for Psychiatry of Old Age, Te Whatu Ora, Waitaha/Canterbury. Susan has PhD in Psychology from the University of Otago, and a Masters of Gerontology from Kings College, London.

Dementia and Spiritual Care: Rev Sandra Wright-Taylor is Chaplain to Older Persons Mental Health, Burwood Hospital and Regional Manager, Te Waipounamu, Hospital Chaplaincy Aotearoa. Sandra's thesis for her Master of Chaplaincy (Otago) will focus on Spiritual Care and Dementia.

RSVP: Sandra.wright-taylor@hospitalchaplaincy.org.nz by 4 May.

Notes from the meetings of Presbytery Council held on Thursday 24 April 2025 in Lincoln and 29 April via Zoom

Highlights

Call to Rev Pauline Hampshire to Akaroa Banks Peninsula

Present at the meeting were: Rev Phyll Harris (Moderator), Keith Christie (via Zoom), Rev Lyn Heine (via Zoom), Rev Brent Richardson, Rev Lynmaree Sopoaga, Christine Arnold (substituting for Ann McMillan) and Rev Martin Stewart (Executive Officer).

Apologies were received from Ann McMillan and Rev Jason King.

Welcome & Devotions

Phyll read from Mark 16:1-8 reflecting on the inaccessibility of Jesus if he is expected to be found in our preconceived notions. The statement 'he has gone on ahead of you' is a great invitation to look for him in unexpected places as there is no place we can go where he has not already been. Kintsugi is the Japanese art of putting broken pottery pieces back together with gold, this can be a metaphor for understanding how the risen Jesus is especially to be found in our cracked and broken places bringing healing and renewal.

Phyll led the meeting in prayer.

Martin identified a potential conflict given his being on the Enterprise Fund establishment team.

Minutes

The email approval given to the Minutes of the Presbytery Council meeting held on 27 March 2025 were ratified

Risk Management

As usual, a discussion was held in private on matters of risk.

Moderator's Report

Phyll reflected on her time serving as Moderator for almost 3 years

- closing churches is never an easy thing
- signs of new life is the work of God - the call to plant and grow Pa Whakāoranga is particularly encouraging
- we have had the delight of seeing the vision of three new church buildings come into fruition with the opening of Hope, Rolleston, Whakatū Nelson and John Knox Rangiora
- Presbytery itself continues to adapt to the current season and creating the role of Kaihautū Whakatipu - Ministries Coordinator has reflected the ongoing nature of this change
- another major milestone in the life of Presbytery through this time is the moving towards the establishing of the enterprise fund
- a meeting of all Presbyteries, generously hosted by Te Aka Puaho at Ohope Marae in 2024 was a highlight
- our greatest treasure and our greatest challenge are the people. The greatest delight I have had as moderator has been participating in many different churches for many different reasons. The faithfulness and tenacity of faith that is held throughout our churches is a strength
- as we see many of our congregations aging and fewer younger people coming through into leadership, we acknowledge the path ahead is not completely clear. Working with Forge is one way of looking to see what God might be up to and how we might work with God is in that for the years to come
- a huge thank you to you all for the privilege of working alongside you and the gifts that each of you bring to the work of God's church. Together we have seen God strengthen and prepare the Presbytery so that it is able to support, resource and the church in what might well be a difficult season ahead, while at the same time being able to plant and nurture seeds for the future of the church in ways that might surprise us, trusting at the end of the day Jesus will do what Jesus has always done and "build his church and the gates of hell will not prevail."

The Executive Officer Report

Martin reported on several aspects of his work including contributions from Abi (Kairuruku Whanake), and Dan (Kaihautū Whakatipu)

- conversations with Michael Schwass & Phyll Harris about Lincoln, Michael re Halswell, and with Dale Peach, the Methodist Superintendent, about both of these plus other ChCh CVs
- the 'celebrate our elders' idea has come off – three long-serving elders will be acknowledged at The Gathering
- Rev Lynmaree Sopoaga has been elected by Presbytery members as Moderator-elect of Alpine Presbytery beginning in May

From Dan

- Gail Weaver's resignation from the Office Support role for Presbytery from 5 June means that we will need to develop an Administration Manager role. Further work on this role needs to take place given changing needs for administrative support
- hoping to explore options at the now closed St Kentigern's church building

From Abi

- the May Gathering programme is finalised
- the option of having the Hanmer Feedback discussion and discussion on other Gathering proposals is being looked at via video call on the Wednesday evening before the Gathering
- ongoing work in Three Peaks Mission (Mid-Canterbury) ahead of church buildings going to market

Key Decision

It was agreed that a conversation between PnF team, key staff and the Prestons Seedling take place to discuss future options at the now closed St Kentigerns.

Property & Finance

- approving the Financial Statement covering the last nine months
- an extra meeting to attend to a PnF addendum report with updated information and recommendations concerning the Alpine Administration Fund, Alpine Discretionary Fund, 3-year forecast and draft budget for 2025/26 following further work from the team. The key outcomes are to be taken to The Gathering 9-10 May

- backdating pay for a staff member because of anomalies and extending a contract pending a review process
- clarifying that at 31 March 2025 there is approximately \$609,000 in the Enterprise Fund, but projections are that a further \$1.5 million will be added in the near future making a total of over \$2 million. 2/3rds of the proceeds from most church closures/sales are transferred to the Fund.

Key decision:

It was agreed that the Alpine Council receive the 2025/2026 draft budget including the levy rate for 2025-26 at 1.2% of assessable income and refer it to the Presbytery for approval.

Human Resources

Lyn Heine shared key aspects of her report, including approving the study leave application from Rev Anne Stewart

Enterprise Fund Draft Report to The Gathering

Peter Nelson joined the meeting to discuss the report

An emphasis on being generous, adventurous, strategic is needed in the Mission Team terms of reference.

The final report and recommendations are going to The Gathering for approval

Correspondence

- a conversation will be arranged with two churches about possible ways to work together
- approval given for a provisional certificate of good standing request for Rev Dr Michael Schwass

General Business

Martin discussed a report re possible developments at Halswell Union and the determination of the congregation to seek a viable and growing future. Consultation with Dale Peach (Methodist Superintendent) has been positive. Rev Dr Michael Schwass will facilitate the ongoing process.

Last meeting

Rev Phyll Harris completes her term as Moderator. Phyll also served a number of years on Council as HR convener.

Jason King has completed his term as a Council member.

Both Phyll and Jason were thanked for their service and unique contributions.

The next meeting of Council is scheduled for **22 May** via Zoom.

Raising Resilient & Secure Children

Yvonne C – Psychologist

Asian psychologist at Petersgate
Counselling Services
UK & NZ Registered Psychologist
PhD in Psychology

Judith K – Counsellor

Guidance Counsellor at Aidanfield
Christian Primary School
BA (Hons), PGCert in Education
Bachelor of Counselling

Learning Outcomes

Role of 'emotions' in
brain development

Safety is "Felt"

Parenting Strategies for
'Mixed Cultures'

5-12 yo childcare



bit.ly/Event17May25

17/05 (Sat)
2pm



Halswell
Library

贊助單位



Asian Community
Transformation
Trust

